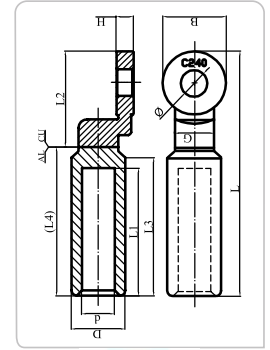


## DIN NORM Bimetal (CU/AL) Cable Lugs

Product Code	Dimensions (mm)											Box Pieces	
	$\varnothing \pm 0.2$	$D \pm 0.2$	$d$	$+0.2$ $-0.13$	$L \pm 2$	$L1 \pm 1.5$	$L2 \pm 1$	$L3$	$0$ $-2$	(L4)	$B \pm 0.5$		$G$
<b>SKP-BS-01608</b>	8.4	16	5.6		79	43	30.5	47.5	48.5	20	12	4	70
<b>SKP-BS-02508</b>	8.4	16	6.4		79	43	30.5	47.5	48.5	20	12	4	70
<b>SKP-BS-03508</b>	8.4	16	8.5		79	43	30.5	47.5	48.5	20	12	4	70
<b>SKP-BS-05010</b>	10.5	20	9.4		88	43	37	47.5	51	24	14.8	5	48
<b>SKP-BS-07012</b>	12.8	20	10.9		88	43	37	47.5	51	24	14.8	5	48
<b>SKP-BS-09512</b>	12.8	20	12.4		88	43	37	47.5	51	24	14.8	5	48
<b>SKP-BS-12012</b>	12.8	25	13.7		110	59	43	64	67	30	18.8	6	20
<b>SKP-BS-15012</b>	12.8	25	15.5		110	59	43	64	67	30	18.8	6	20
<b>SKP-BS-18512</b>	12.8	32	17		117	59	49	64	68	35	23.8	7	15
<b>SKP-BS-24012</b>	12.8	32	19.5		117	59	49	64	68	35	23.8	7	15
<b>SKP-BS-30016</b>	16.5	40	23.2		155.5	93	51	101	104.5	36	28	7.5	6
<b>SKP-BS-40016</b>	16.5	40	26		155.5	93	51	101	104.5	36	28	7.5	6
<b>SKP-BS-50016</b>	17	47	29		193	94	84	99.5	109	60	36.8	10	-
<b>SKP-BS-63016</b>	17	47	32.5		193	94	84	99.5	109	60	36.8	10	-
<b>SKP-BS-80016</b>	17	60	37.8		260	125	110	144.7	150	80	45	10.3	-
<b>SKP-BS-100016</b>	17	60	42		260	125	110	144.7	150	80	45	10.3	-



## DIN NORM Bimetal (CU/AL) Cable Lugs

Product Code	Dimensions (mm)			* Package Amount (Pcs)*	* Package Weight (kg) *
	L (mm)	d (mm)	d1 (mm)		
<b>AL25/CU10</b>	66.5	6.4	4.5	135	3,73
<b>AL25/CU16</b>	72.5	6.4	5.5	135	4,46
<b>AL35/CU16</b>	72.5	8.5	5.5	135	4,09
<b>AL35/CU25</b>	72.5	8.5	7	135	4,28
<b>AL50/CU25</b>	75	9.4	7	96	4,45
<b>AL50/CU35</b>	75	9.4	8.2	96	5,03
<b>AL70/CU35</b>	75	10.9	8.2	96	4,81
<b>AL70/CU50</b>	81	10.9	10	96	5,54
<b>AL95/CU50</b>	81	12.4	10	96	5,40
<b>AL95/CU70</b>	83	12.4	11.5	96	6,20
<b>AL120/CU70</b>	99	13.7	11.5	48	4,79
<b>AL120/CU95</b>	107	13.7	13.5	48	5,78
<b>AL150/CU95</b>	107	15.5	13.5	48	5,56
<b>AL150/CU120</b>	107	15.5	15.5	48	5,81
<b>AL185/CU120</b>	107	17	15.5	32	5,49
<b>AL185/CU150</b>	112	17	17	32	6,44
<b>AL240/CU150</b>	112	19.5	17	32	6,10
<b>AL240/CU185</b>	115	19.5	19	32	6,87
<b>AL240/CU240</b>	116	19.5	21.5	32	7,90
<b>AL300/CU240</b>	153.5	23.2	21.5	12	4,64
<b>AL300/CU300</b>	159.5	23.2	24.5	12	5,21

